

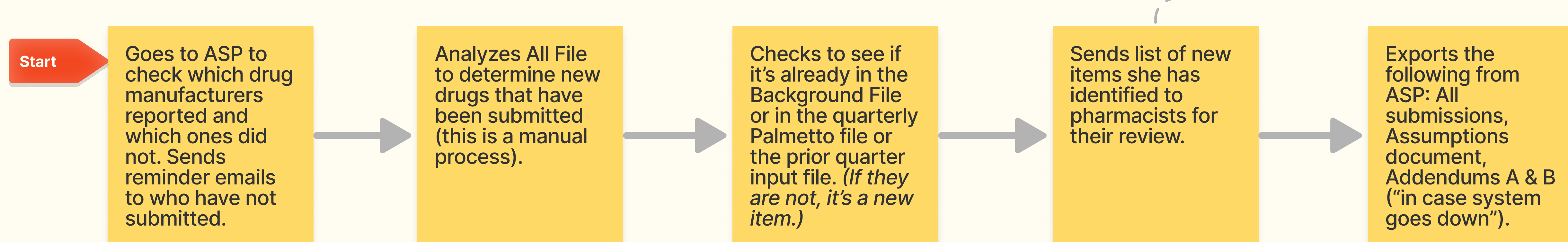
2^o

Current Process & Tasks

High Level Summary of the Process & Tasks

CMS Health Insurance Specialist (Felicia)

Begins Quarterly ASP Process



"... I'm checking, doing different validations. I guess you can call it different analysis and processes on the data. There are several things that I do when I go in there to do that. I'm checking it to see if it's already in the background file, if it's in the quarterly Palmetto files..."

"The input file is everything from that quarter, plus just a couple of columns that I put in. Well, I add more than a couple, but the columns that I put in there to analyze the data. The background file, however, is continuous, so I'm continuously adding columns in there. So it's a couple of years of data ... sometimes (Excel) won't save it. It'll give me this notice, and that means I have to get rid of some of the columns."

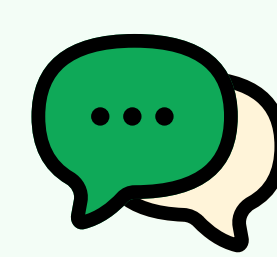
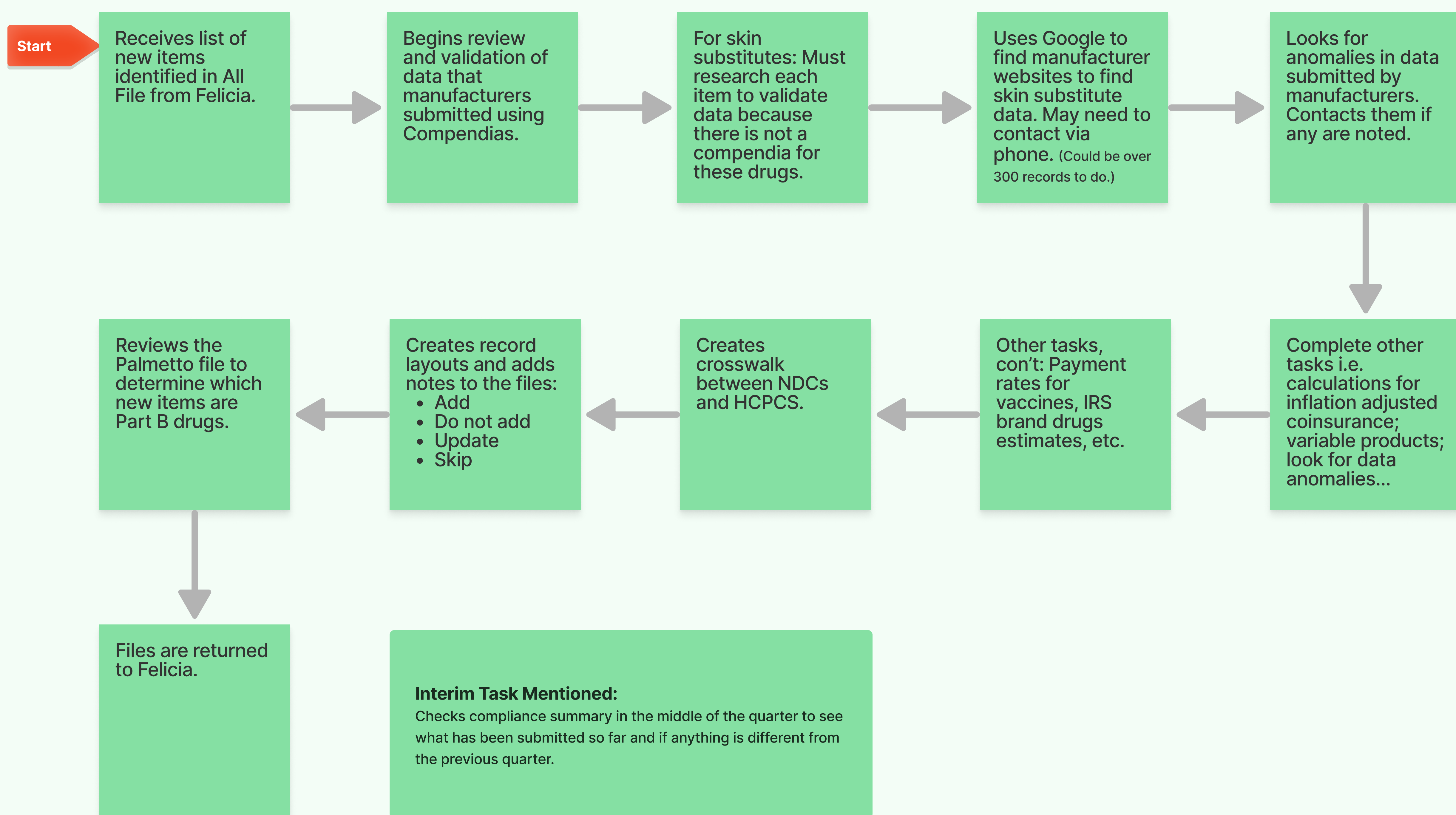


From Portal Overview meeting @ 31:27 to 35:01: Felicia demos what she does in one of the spreadsheets. (Clip is not linked from this FigJam page.)

CMS Pharmacists

Reviews, Validates Data & Creates the Crosswalks

Disclaimer: This is a compilation of tasks the pharmacists perform. This is not a complete list, and the tasks may not all be in the order that they are actually performed.



"It seems like we're every month we're reinventing the wheel of gathering all this information and calculating it when I don't think it needs to be as hard as we make it."

"Everything is kept in one Excel file. That's like 6,000 lines, and then everything is manipulated off of that file, and it's a little scary, because you know, if somebody accidentally changes something, and saves the file, and nobody catches that, and then that file is uploaded..."

"We maintain (the crosswalk). I don't know if you guys have seen our background file. We put all the background data into that file. At one point we had about 14,000 (drugs), but then we (removed) some older, inactive drugs. And now we're down to about 7,300, I think."

"A lot of what we're doing is we're validating the information they submitted against publicly available information. Package size, the number of vials in a package. Then calculating the bill units, and bill units per package. It's a very manual process (in Excel). Having one character in the Excel formula can throw it off."

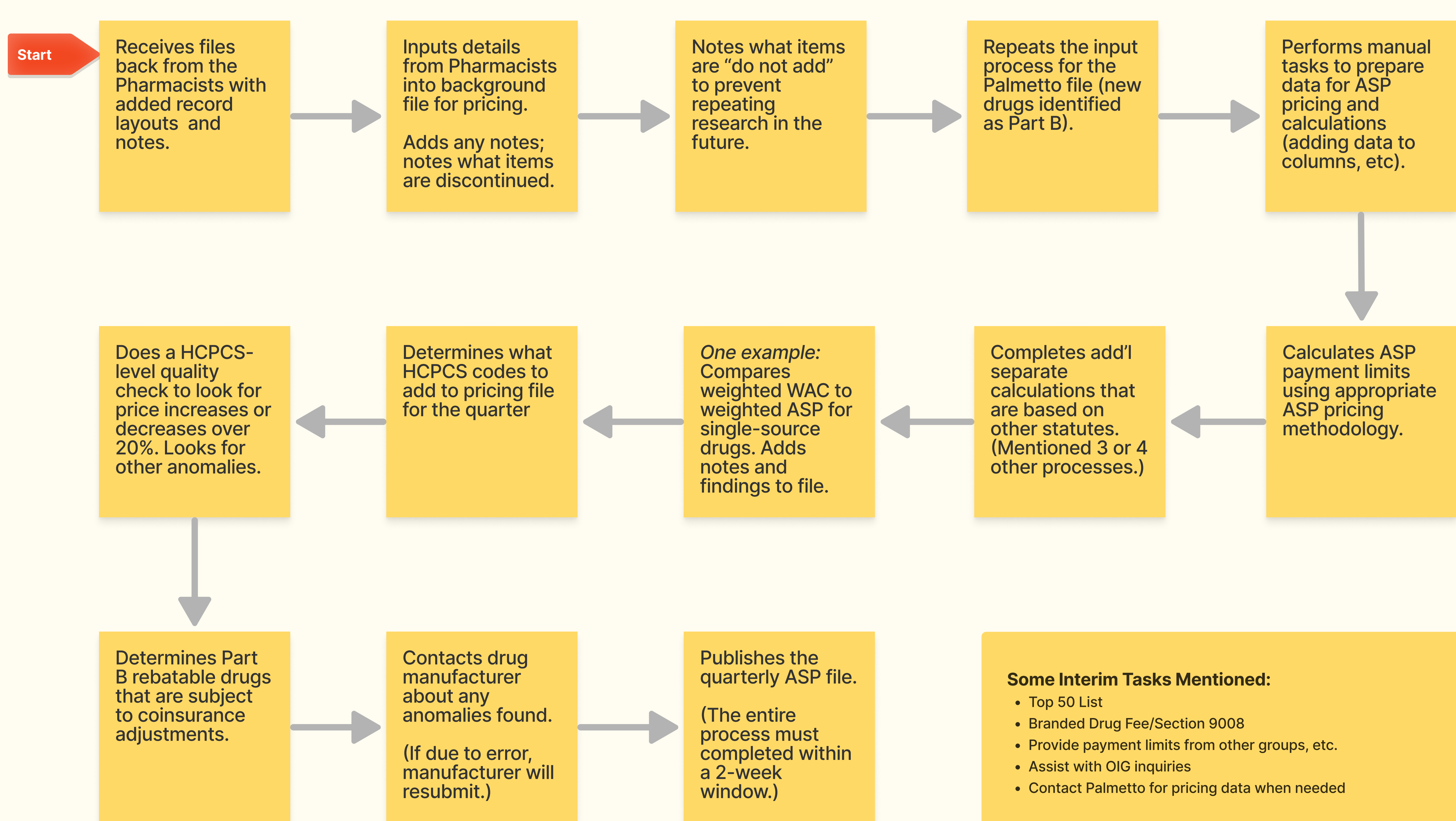


Maria @ 40:12 to 42:53 or 44:32 - Demo of research for skin substitutes. (Clip is not linked from this FigJam page.)

CMS Health Insurance Specialist (Felicia)

Updates Files and Completes ASP Pricing

Disclaimer: This is a compilation of tasks that Felicia performs. This is not a complete list, and the tasks may not be in the order that they are actually performed.



"(For end for 4th quarter), I don't get those files until January 30. So I start manipulating the data and running all these processes for pricing between the 1st and 3rd week of February, because we need to start breathing. Most of this stuff occurs in a two-week window."



From Portal Overview meeting @51:29 to 53:05 - Felicia demos some tasks she does after receiving files back from Pharmacists. (Clip is not linked from this FigJam page.)

Definitions

- "The ASP NDC HCPCS is the crosswalk. It shows the NDCs that correspond to the specific HCPCS codes. If anyone wanted to see which NDCs the payment limits were based off, they can see those NDCs within that HCPCS code, and that's what the crosswalks do."
- "All File is a compilation of all the manufacturer reported data for the quarter exported from ASP. We don't touch it. The All File is my first working file. We turn that into what we call the input file."
- The Input file is then used for the quarterly process. It includes everything from the quarter; adds columns for "different values" that is needed for analysis. All work is done in this file "The input file is where we take the All File and I input different fields in there."
- "The background file is all of the NDCs that we've crossed for the HCPCS codes that we determined we need to calculate payment limits for (NDCs are matched to HCPCS codes). It's continuous and contains a couple years' worth of data; has to delete data at times or else the file won't save. Data is pulled into it from the input file, not the All File."
- "Palmetto identifies all the new NDCs that have been added to the compendia, and they send us a file of that, and that's what we call our monthly file for the quarter."